

plasma care®



## Quick Guide

Application, cleaning and maintenance  
of the plasma care®

# Step by step quick guide

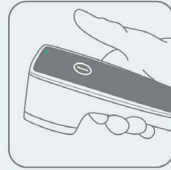
## 1. SWITCH ON THE DEVICE



To start, press the touch button of the device softly with your thumb for approx. 2 seconds.

### Important:

- Press the button gently.
- Your thumb should cover the touch button completely.



Remove your thumb as soon as the touch button indicator light turns white.

## 2. ATTACH THE STERILE SINGLE-USE SPACER



Open the sterile packaging of a plasma care® spacer.

### Important:

- Do not touch the spacer.

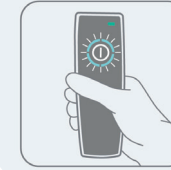


Attach the spacer to the device. You will hear a click sound.

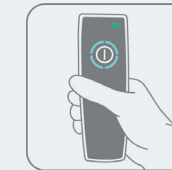
### Important:

- The spacer's removal tab must be on the top.
- Leave the spacer in the package while attaching it to the device for sterility reasons.

## 3. INITIALIZATION OF THE DEVICE

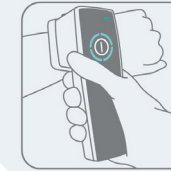


The device initializes automatically. This is indicated by a beep and a blue flashing indicator light.



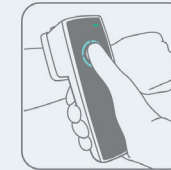
Wait until the blue indicator light stops flashing and a constant blue light appears.

## 4. PLACE THE DEVICE ON THE WOUND



Gently place the spacer-equipped device head directly onto the wound surface, so that ideally a closed plasma volume is created between skin and spacer.

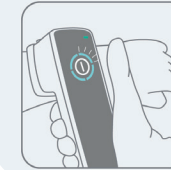
## 5. START THE TREATMENT



Start the treatment by gently tapping the touch button of the device with your thumb for approx. 1 second.

### Important:

- Please do not press the button longer than described. Otherwise the device will switch off.
- If the device switches off, the spacer cannot be used anymore.



The first segment of the blue indicator light starts flashing and the treatment cycle begins.

Each of the four ring segments blinks for 15 seconds. A complete treatment cycle takes 60 seconds.

## 6. FINISH THE TREATMENT



Hold the device in position. It stops automatically after 60 seconds (four segments of the blue indicator ring). If necessary, start a further 1-min. treatment cycle by shortly tapping the touch button.

**Important:** • Do not switch off the device in case of multiple use of one spacer.

Only one patient can be treated with one spacer. The capacity of a spacer comprises 6-times a 1-min. treatment in sequence within a time frame of 10 minutes.

**Important:** The treatment time per wound area must be limited to 3 minutes (=3 treatment cycles).

## 7. DISPOSAL OF SPACERS / SWITCHING OFF THE DEVICE



Remove the spacer by gently pushing the tab on top of the spacer forward.

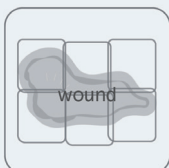
**Important:** Do not try to remove the spacer in any other way by force!



Dispose the spacer according to your hygiene guidelines for infectious waste.

The device switches off automatically after 90 sec. To restart the device, see chapter 1 „SWITCH ON THE DEVICE“

## TREATMENT OF LARGER WOUNDS



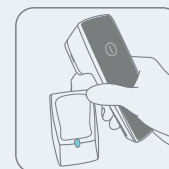
One treatment covers a wound area of 13 cm<sup>2</sup>. For one spacer, this corresponds to a maximum treatable wound area of 78 cm<sup>2</sup> (6 x 13 cm<sup>2</sup>).

For larger wounds carefully plan the wound treatment in advance. How many wound sections are to be treated in which sequence?

**Important:** Make sure that wound bed preparation has been completed before attaching the spacer.

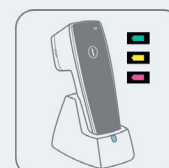
# Charging and power supply

## CHARGING THE DEVICE



1. Plug in the power adapter after connecting it to the docking station.

2. In order to charge the device, put it in the docking station, which is also an ideal place to store the device.

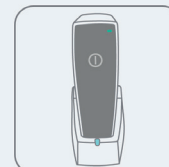


If the plasma care® is not used, it should be stored in the docking station to keep the device charged.

**Important:** • There is no risk of battery overcharging.

The battery charge indicator light is located in the upper right corner of the touch cover. When the device is fully charged, the light is green.

During charging, it alternately blinks red, green and yellow.



**Important:** • Whenever the device has not been used for a long time and has not been stored properly in the docking station it might have become discharged.

A fully discharged device needs to be recharged for 2 hours at a minimum.

# Cleaning and disinfection instructions

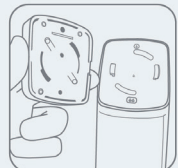
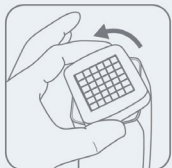
## CLEANING THE DEVICE

The device should be cleaned and disinfected regularly. A superficial wipe disinfection should be done after each treatment. The plasma source should only be cleaned if there is a visible contamination.

A more intensive cleaning of the unit and plasma source is recommended at least once a month.

**Important:** • Do not use water or spray liquids for cleaning

## DISINFECTING THE DEVICE AND THE PLASMA SOURCE



Before starting the disinfection, remove the plasma source from the device. Hold the plasma source with two fingers and turn it approx. 30° anti-clockwise without force to unlock it.

Then pull off carefully the plasma source upwards from the device and store it safely on a plain surface.



The device body is disinfected by validated wipe disinfection. The back and grid side of **the plasma source must only be dabbed with a lint-free fog-moist tissue.**



Do not reattach the plasma source to the device directly after disinfection. The plasma source must dry completely, preferably overnight. If the plasma source is not completely dry, it may cause unrepairable damage to the device.

# General instructions

The plasma care® is a sensitive medical device.

Please follow these instructions to ensure your device works perfectly in the long term.

- The plasma care® device is very **sensitive to shocks** and should not be dropped or exposed to **severe vibrations!**

- Make sure that the spacer is removed correctly! (See chapter 7 "DISPOSAL OF SPACER")

- Only disinfectant wipes approved for the cleaning of medical devices should be used. Please don't use any spray disinfection.

## The plasma source:

- The plasma source is the heart of the plasma care® device, where plasma is generated by means of micro-discharge. It's thin ceramic plate with sensitive electrical contacts is sensitive to shocks and should be kept clean.

- **The plasma source must not get wet!**

- **To remove the plasma source** for disinfection or drying, **turn it without force to the left** and lift it off. The plasma source can easily put on and taken off without using force. Take care that the cut-outs of the plasma source and the lashes of device head fit together.



Reading this Quick Guide does not replace the thorough reading of the instruction manual.

manufacturer:



**terraplasma medical GmbH**

Parkring 32

85748 Garching bei München

+ 49 89 588 055 30

[info@terraplasma-medical.com](mailto:info@terraplasma-medical.com)

[www.terraplasma-medical.com](http://www.terraplasma-medical.com)